

# Dekstone®

Dekstone® Architectural Series

## Welcome to Dekstone®

**Dekstone®** is the 1st and most visually appealing, non-combustible product in the deck market.

Please use our **Dekstone®** detail series to assist you in the design and construction of your new deck.

For additional information, visit the **Dekstone®** website at [www.dekstone.com](http://www.dekstone.com) or call Stepstone, LLC at 1.800.572.9029

**Dekstone®** is a great choice for the surface of any deck.

# Dekstone®

Dekstone® Architectural Series

## Dekstone® Architectural Details

### Table of Contents

DEK-1-04	General Details	5
DEK-1-08	Sample Floor Plan	6
DEK-2-01	Contained Edge Parallel to Support	7
DEK-2-02	Contained Edge Perpendicular to Support	8
DEK-2-03	Cantilever Edge Parallel to Support	9
DEK-2-04	Cantilever Edge Perpendicular to Support	10
DEK-2-05	Field - Parallel to Support, Unbolted	11
DEK-2-06	Field - Parallel to Support, Bolted	12
DEK-2-07	Field - Perpendicular to Support, Bolted	13
DEK-2-09	Suggested Connection to Building - Raised Foundation	14
DEK-2-10	Suggested Threshold Detail	15
DEK-2-11	Suggested Connection to Building - Concrete Slab Foundation	16
DEK-2-13	Connection Parallel to Building	17
DEK-2-14	Inside Corner at Building	18
DEK-2-15	Contained Edge Profile	19
	False Joint Reinforced Dekstone® Paver	20
	Dekstone® Framing Comparison Chart	21

Page 2

Visit us at our website [dekstone.com](http://dekstone.com)

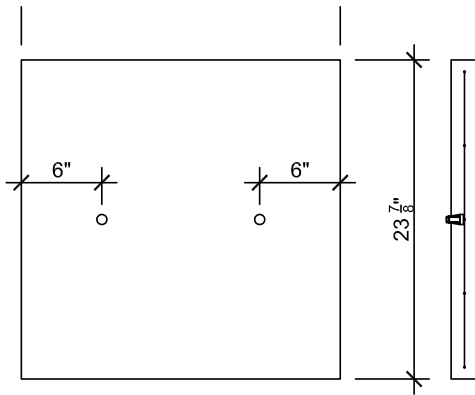
Dekstone® is a product of Stepstone, LLC

17025 SO. MAIN ST. GARDENA, CA 90248 310-327-7474  
13238 SO. FIGUEROA ST. LOS ANGELES, CA 90061 [www.dekstone.com](http://www.dekstone.com)

06.2024

# Dekstone®

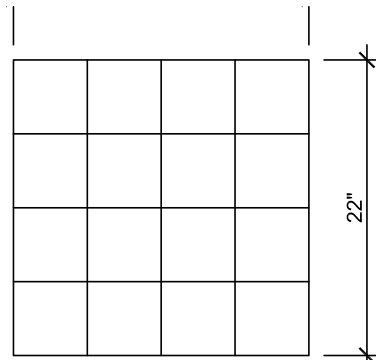
## Dekstone® Architectural Series



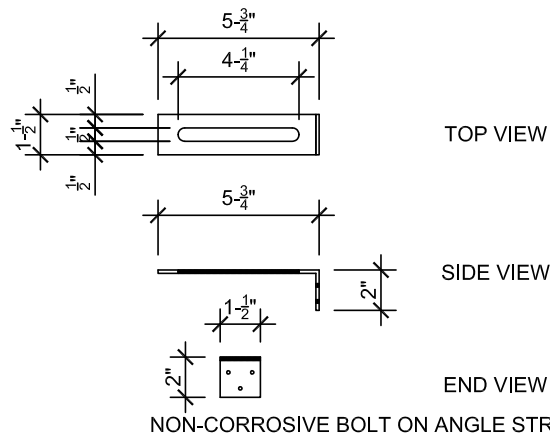
TYPICAL DEKSTONE®  
PLAN AND PROFILE



NON-CORROSIVE THREADED INSERTS  
3/8" BOLT WITH FLAT WASHER & LOCK WASHER



WELDED WIRE MESH REINFORCING



TOP VIEW

SIDE VIEW

END VIEW

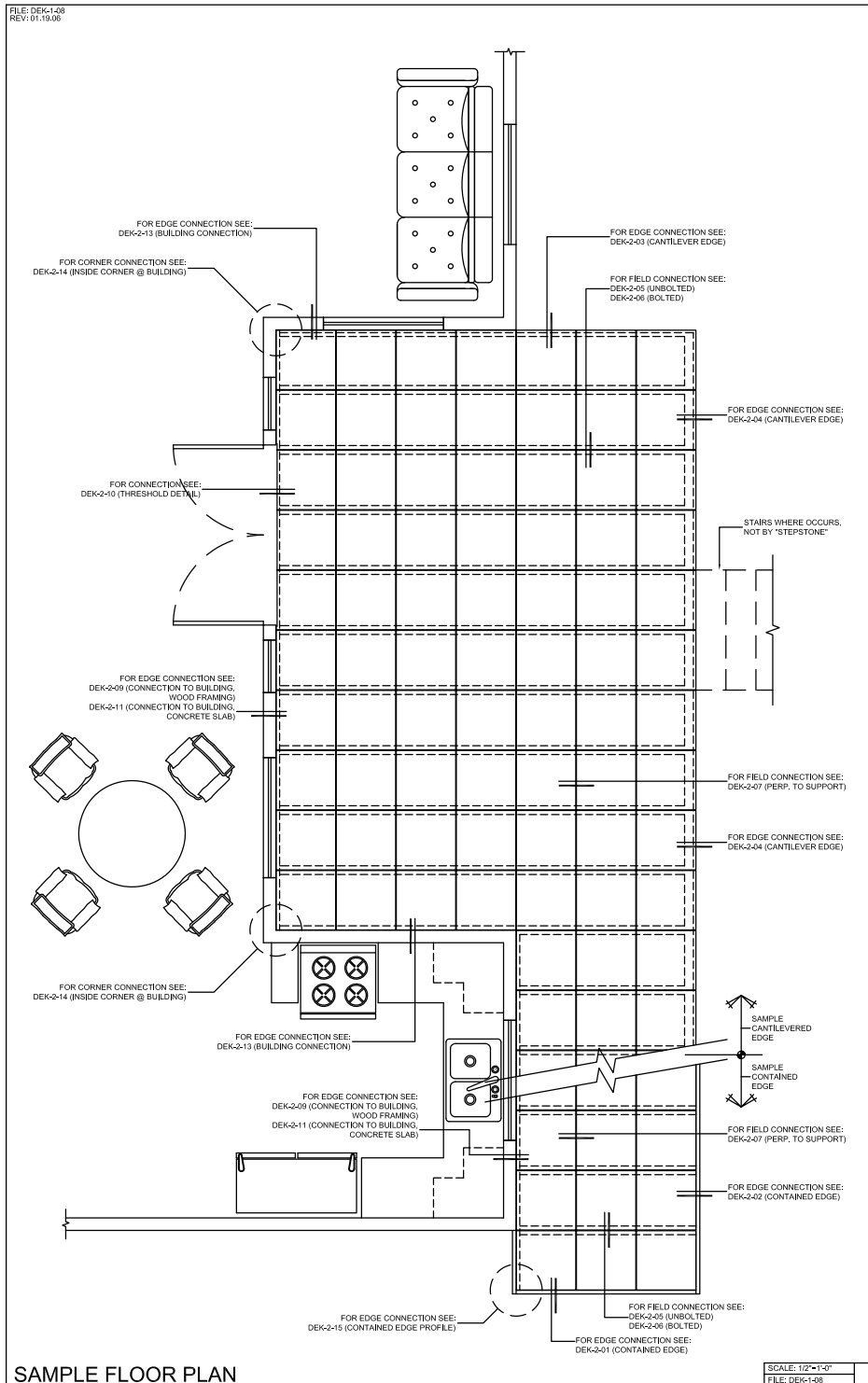
NON-CORROSIVE BOLT ON ANGLE STRAP

### NOTES:

1. MATERIAL:
  - PRECAST CONCRETE DEKSTONE SHALL HAVE A MINIMUM COMPRESSIVE STRENGTH OF 5000 P.S.I.
  - REINFORCEMENT SHALL BE ZINC PLATED WELDED WIRE MESH
  - NOMINAL SIZE 23 7/8" x 23 7/8" x 2" THICK.
2. EDGE SUPPORT:
  - 2x BLOCKING EDGE SUPPORT REQUIRED AT END OF FLOOR JOIST.
3. DEKSTONE® PAVERS SHALL BE INSTALLED WITH A WATERPROOF MEMBRANE OVER FRAMING MEMBERS; DO NOT INSTALL DIRECTLY ON WOOD MEMBERS, MIN.1/8" GAP.
4. DEKSTONE® PAVERS SHALL HAVE A MINIMUM 1 1/2" BEARING SURFACE ON TWO PARALLEL SIDES.
5. FRAMING MEMBERS NOT BY "STEPSTONE" (TYPICAL).
6. ALL DEKSTONES® HAVE THE ABILITY TO BE FASTENED TO THE JOIST WITH TWO THREADED INSERTS.
7. USUALLY ONLY THE PERIMETER PAVERS NEED TO BE CONTAINED TO CONTAIN THE FIELD OF THE DEKSTONE®.
8. IN SOME CASES IT MAY BE DESIRABLE TO FASTEN ALL DEKSTONES® TO THE JOISTS.
9. THESE DETAILS ARE INTENDED TO BE THE STANDARD PLAN FOR DEKSTONE® PRECAST CONCRETE DECKING MATERIAL ONLY. THE DESIGN OF THE STRUCTURE AND COMPLIANCE TO LOCAL BUILDING CODES IS THE RESPONSIBILITY OF THE USER.

# Dekstone®

Dekstone® Architectural Series



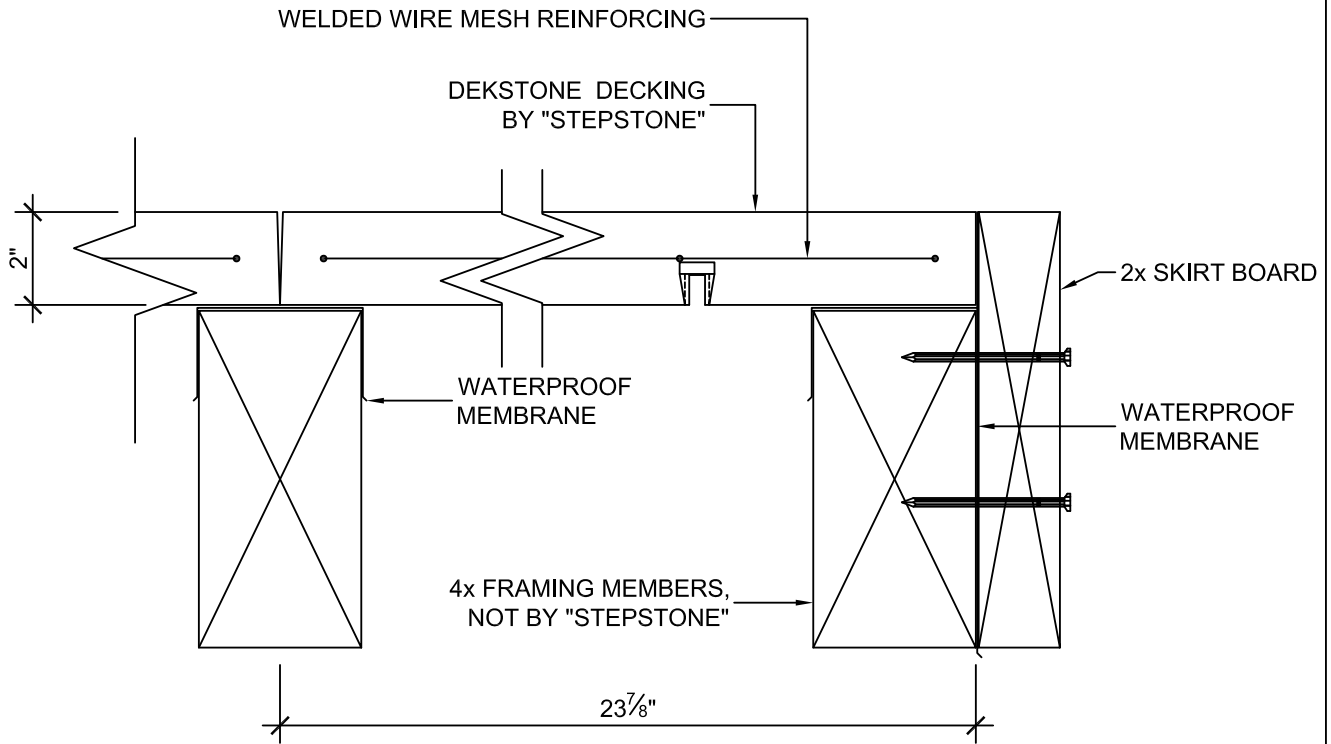
Visit us at our website [dekstone.com](http://dekstone.com)  
Dekstone® is a product of Stepstone, LLC

17025 SO. MAIN ST. GARDENA, CA 90248 310-327-7474  
13238 SO. FIGUEROA ST. LOS ANGELES, CA 90061 [www.dekstone.com](http://www.dekstone.com)

# Dekstone®

Dekstone® Architectural Series

FILE: DEK-2-01  
REV: 01.19.06



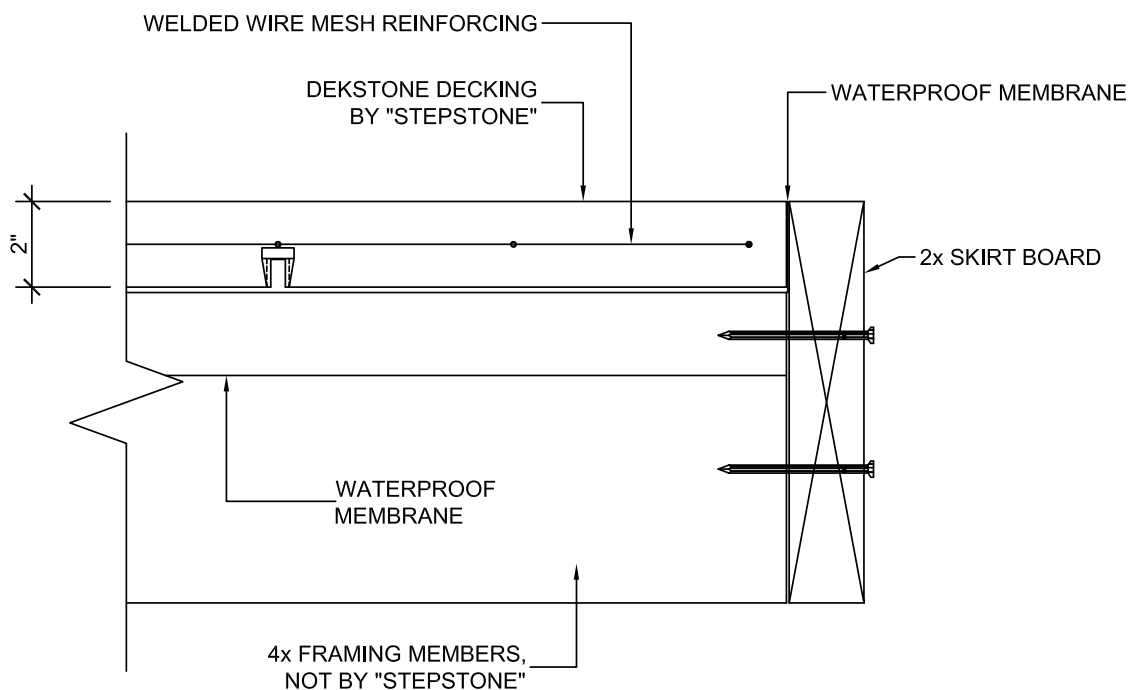
CONTAINED EDGE -  
PARALLEL TO SUPPORT

SCALE: 3"=1'-0"
FILE: DEK-2-01

# Dekstone®

Dekstone® Architectural Series

FILE: DEK-2-02  
REV: 01.19.06



CONTAINED EDGE -  
PERPENDICULAR TO SUPPORT

SCALE: 3"=1'-0"

FILE: DEK-2-02

Visit us at our website [dekstone.com](http://dekstone.com)

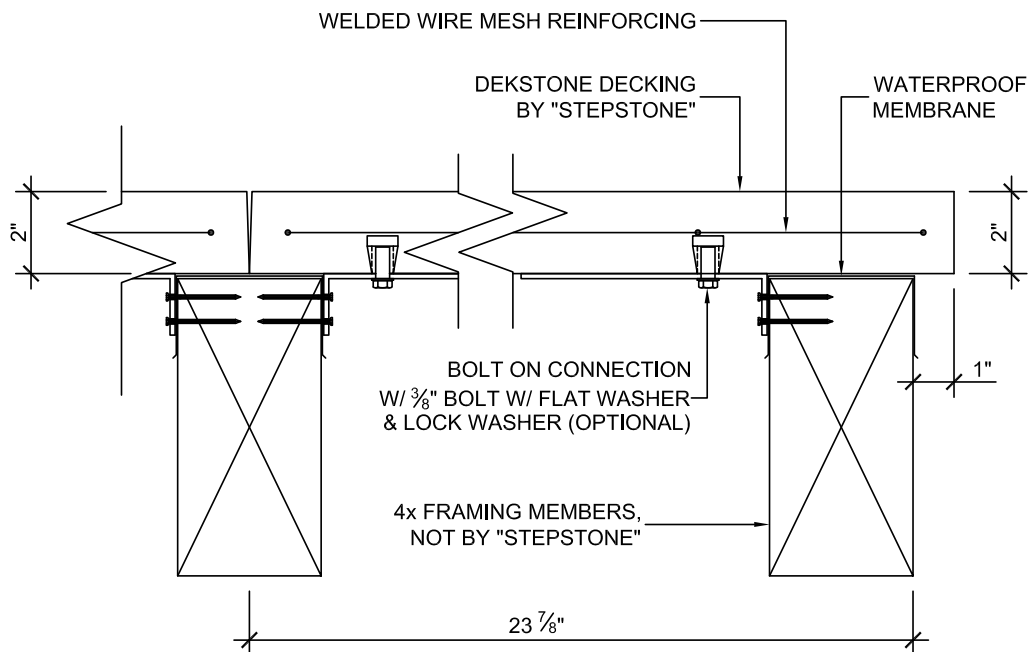
Dekstone® is a product of Stepstone, LLC

17025 SO. MAIN ST. GARDENA, CA 90248 310-327-7474  
13238 SO. FIGUEROA ST. LOS ANGELES, CA 90061 [www.dekstone.com](http://www.dekstone.com)

# Dekstone®

Dekstone® Architectural Series

FILE: DEK-2-03  
REV: 01.19.06



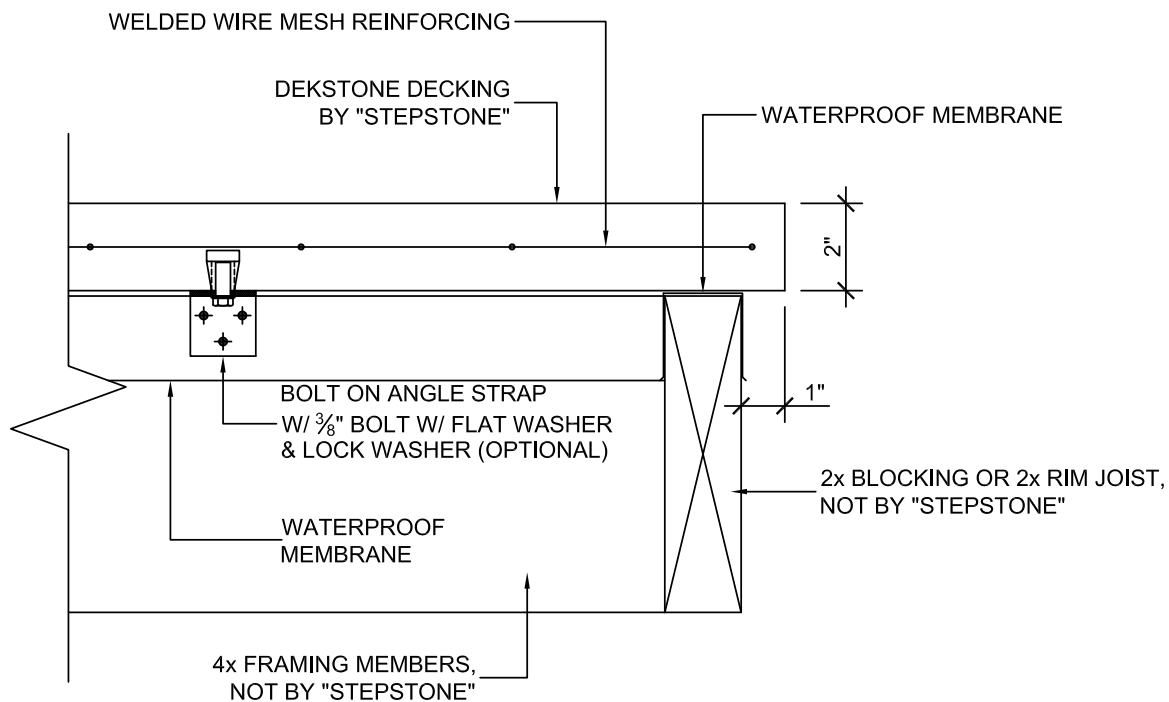
CANTILEVER EDGE -  
PARALLEL TO SUPPORT

SCALE: 3"=1'-0"  
FILE: DEK-2-03

# Dekstone®

Dekstone® Architectural Series

FILE: DEK-2-04  
REV: 01.19.06



CANTILEVER EDGE -  
PERPENDICULAR TO SUPPORT

SCALE: 3"=1'-0"
FILE: DEK-2-04

Visit us at our website [dekstone.com](http://dekstone.com)  
Dekstone® is a product of Stepstone, LLC

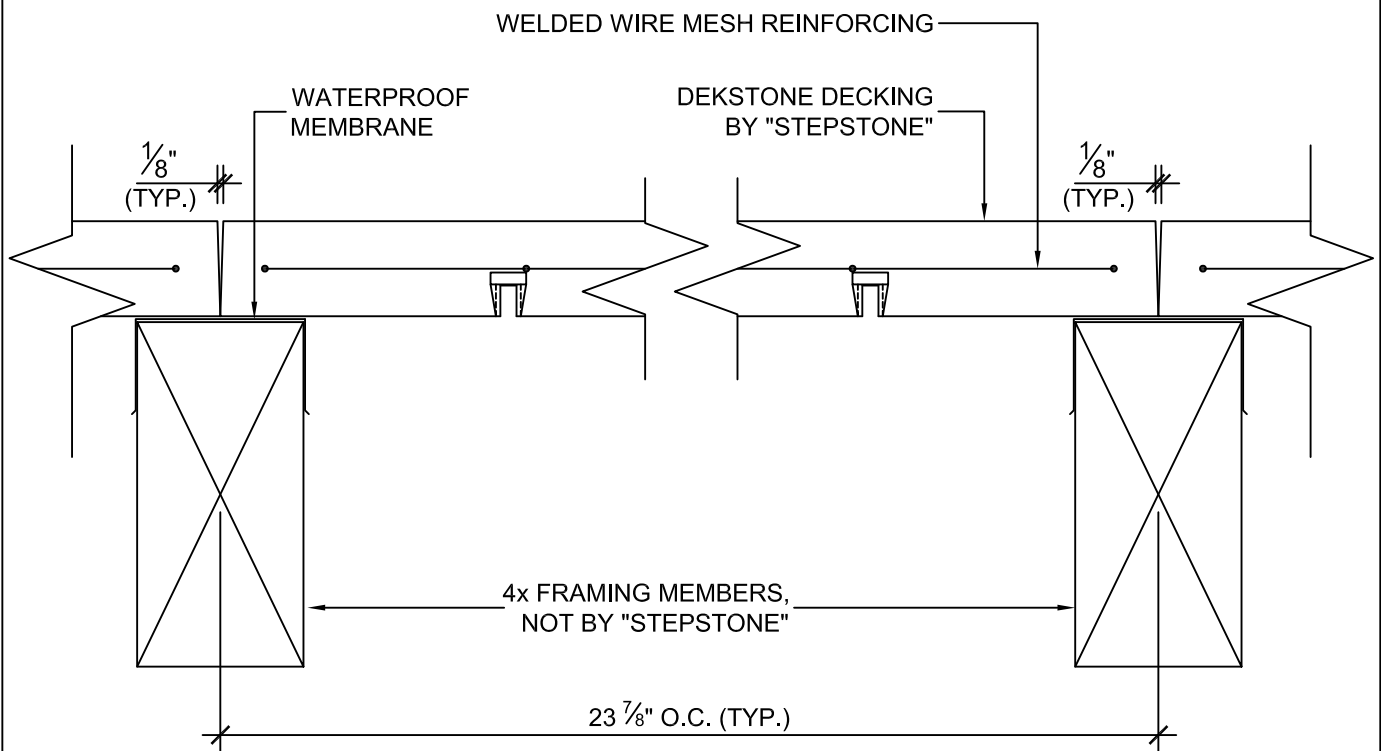
17025 SO. MAIN ST. GARDENA, CA 90248 310-327-7474  
13238 SO. FIGUEROA ST. LOS ANGELES, CA 90061 [www.dekstone.com](http://www.dekstone.com)



# Dekstone®

Dekstone® Architectural Series

FILE: DEK-2-05  
REV: 01.19.06



FIELD -  
PARALLEL TO SUPPORT, UNBOLTED

SCALE: 3"=1'-0"
FILE: DEK-2-05

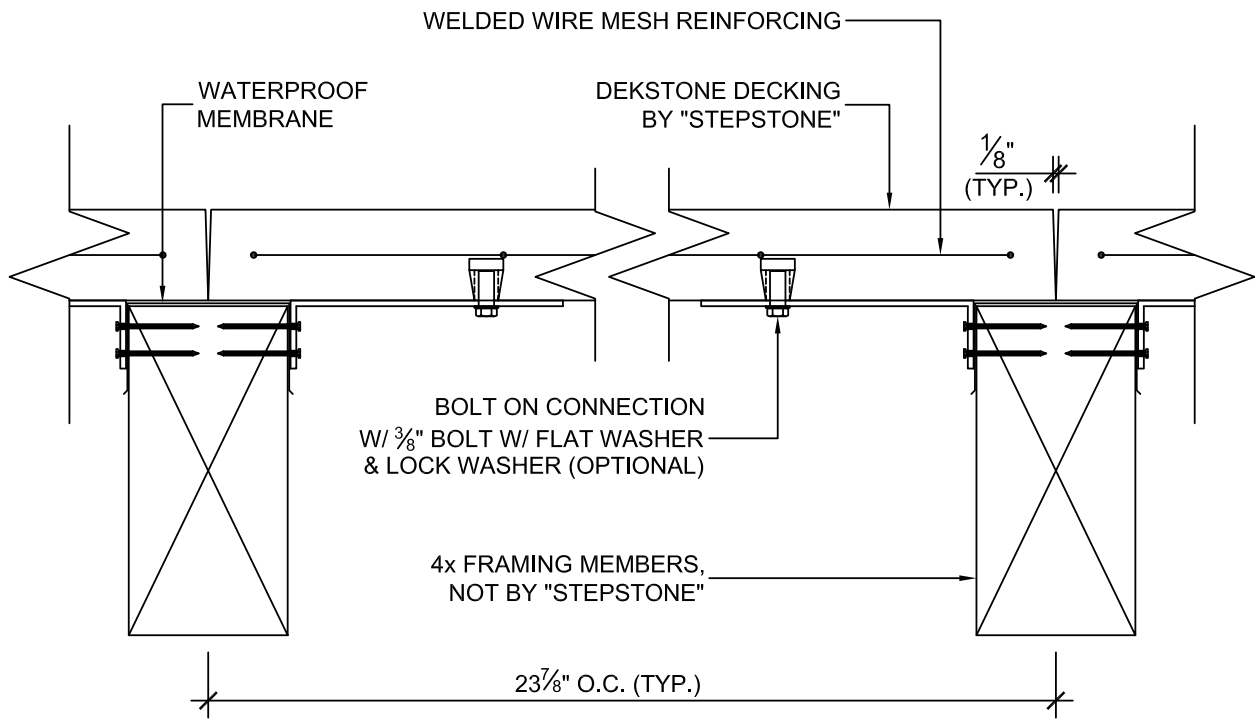
Visit us at our website [dekstone.com](http://dekstone.com)  
Dekstone® is a product of Stepstone, LLC

17025 SO. MAIN ST. GARDENA, CA 90248 310-327-7474  
13238 SO. FIGUEROA ST. LOS ANGELES, CA 90061 [www.dekstone.com](http://www.dekstone.com)

# Dekstone®

Dekstone® Architectural Series

FILE: DEK-2-06  
REV: 01.19.06



FIELD -  
PARALLEL TO SUPPORT, BOLTED

SCALE: 3"=1'-0"  
FILE: DEK-2-06

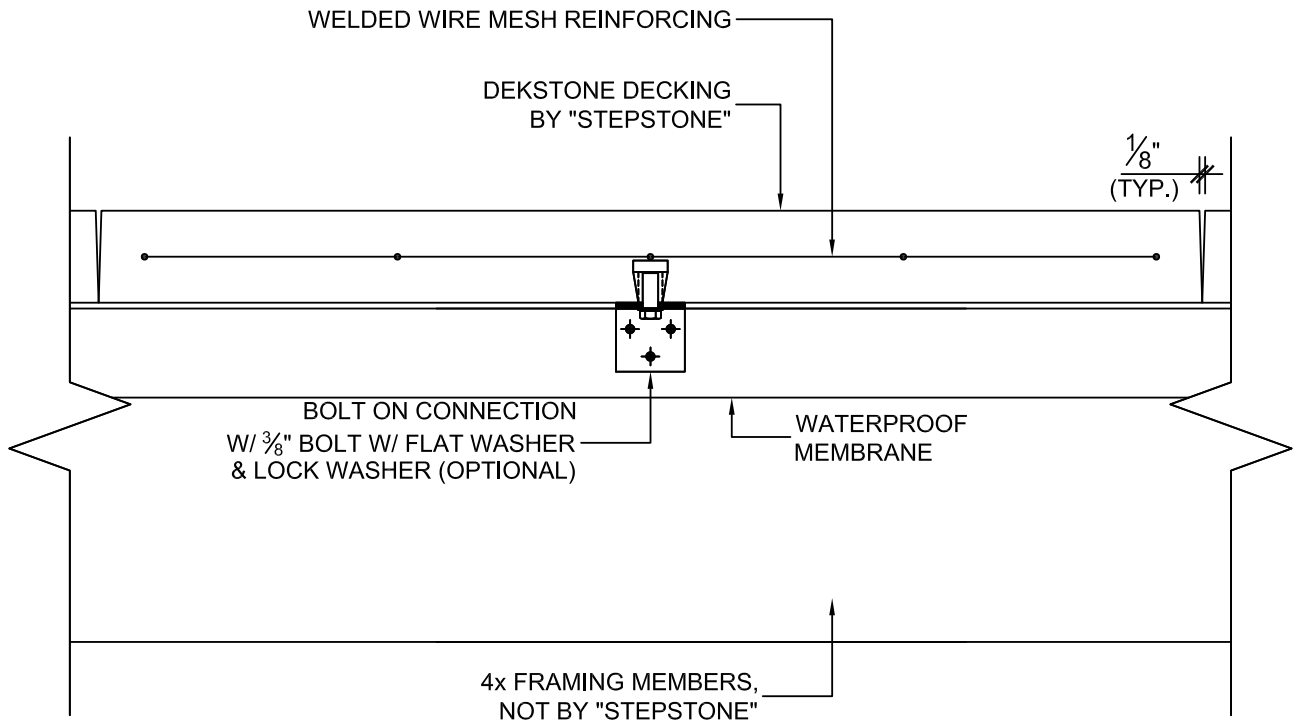
Visit us at our website [dekstone.com](http://dekstone.com)  
Dekstone® is a product of Stepstone, LLC

17025 SO. MAIN ST. GARDENA, CA 90248 310-327-7474  
13238 SO. FIGUEROA ST. LOS ANGELES, CA 90061 [www.dekstone.com](http://www.dekstone.com)

# Dekstone®

Dekstone® Architectural Series

FILE: DEK-02-07  
REV: 01.19.06



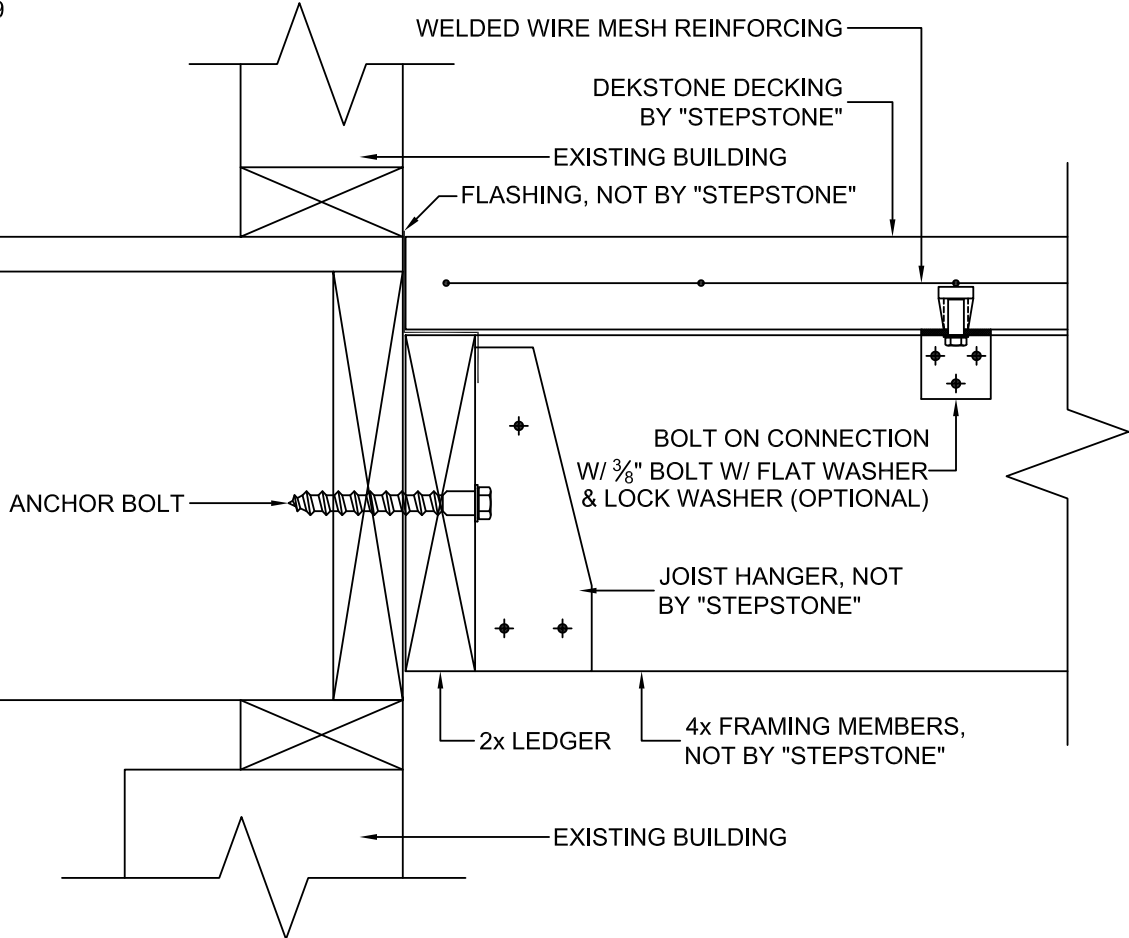
FIELD -  
PERPENDICULAR TO SUPPORT, BOLTED

SCALE: 3"=1'-0"  
FILE: DEK-02-07

# Dekstone®

Dekstone® Architectural Series

FILE: DEK-2-09  
REV: 01.19.06



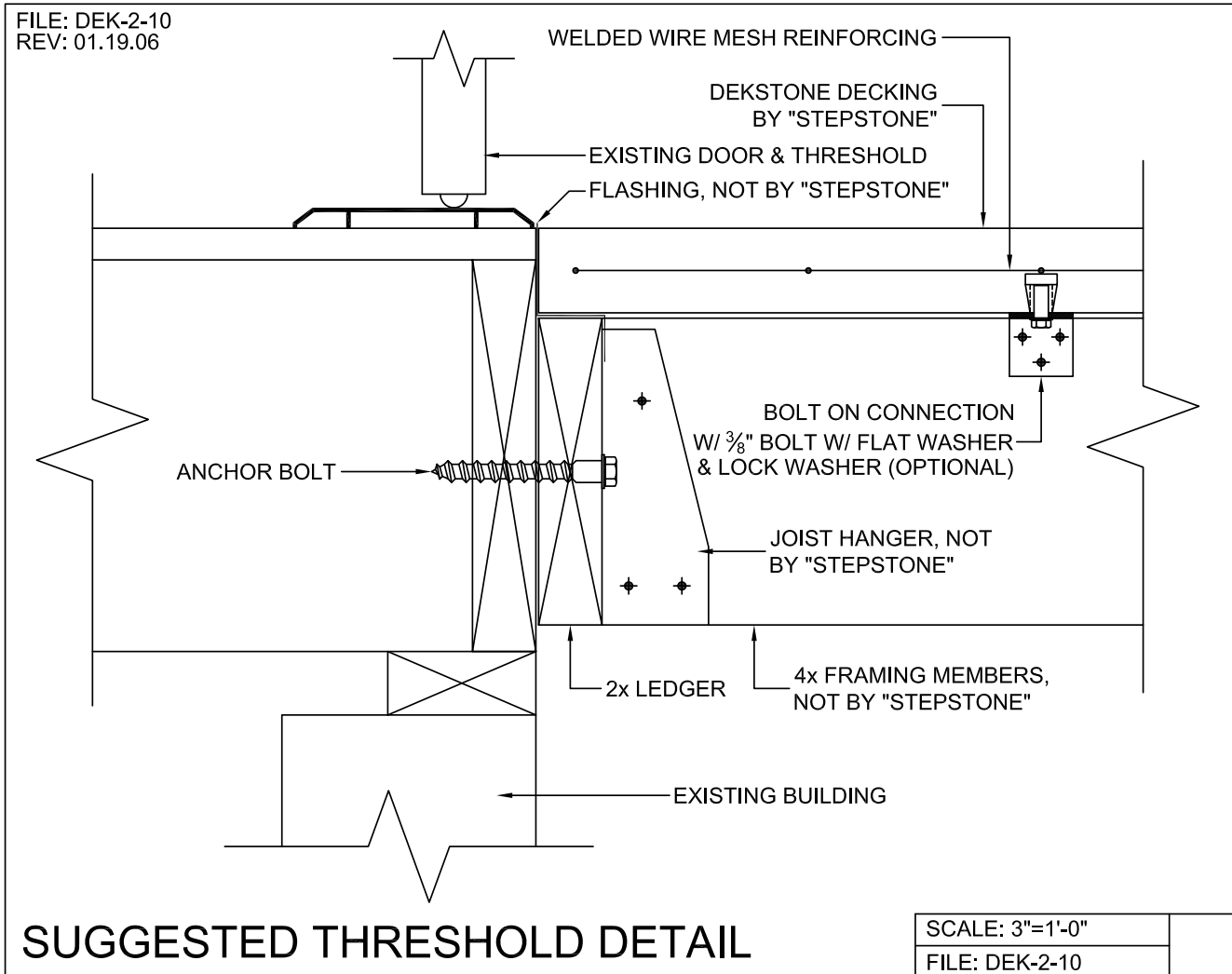
**SUGGESTED CONNECTION TO BUILDING  
RAISED FOUNDATION**

SCALE: 3"=1'-0"  
FILE: DEK-2-09

# Dekstone®

Dekstone® Architectural Series

FILE: DEK-2-10  
REV: 01.19.06



Visit us at our website [dekstone.com](http://dekstone.com)

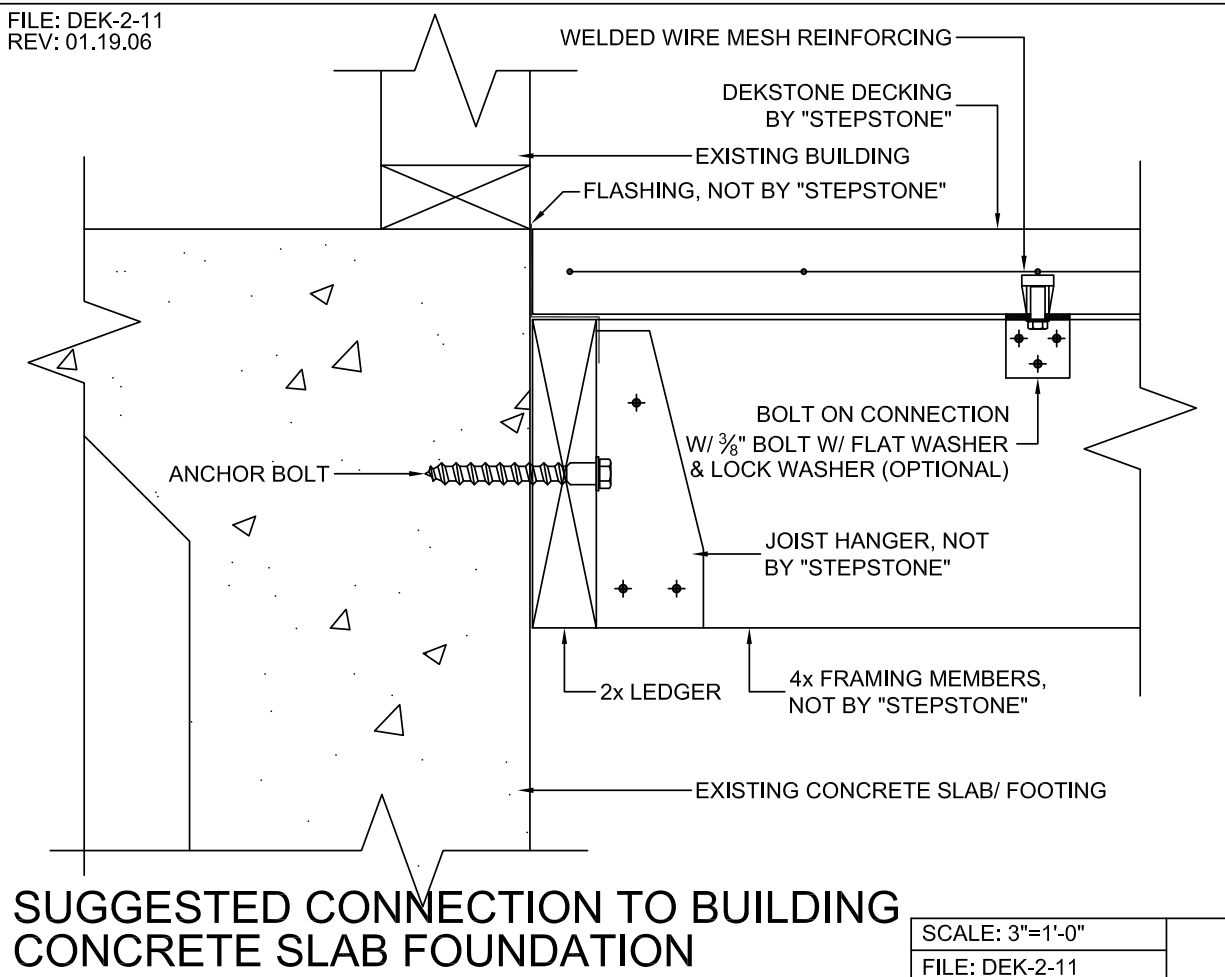
Dekstone® is a product of Stepstone, LLC

17025 SO. MAIN ST. GARDENA, CA 90248 310-327-7474  
13238 SO. FIGUEROA ST. LOS ANGELES, CA 90061 [www.dekstone.com](http://www.dekstone.com)

# Dekstone®

Dekstone® Architectural Series

FILE: DEK-2-11  
REV: 01.19.06

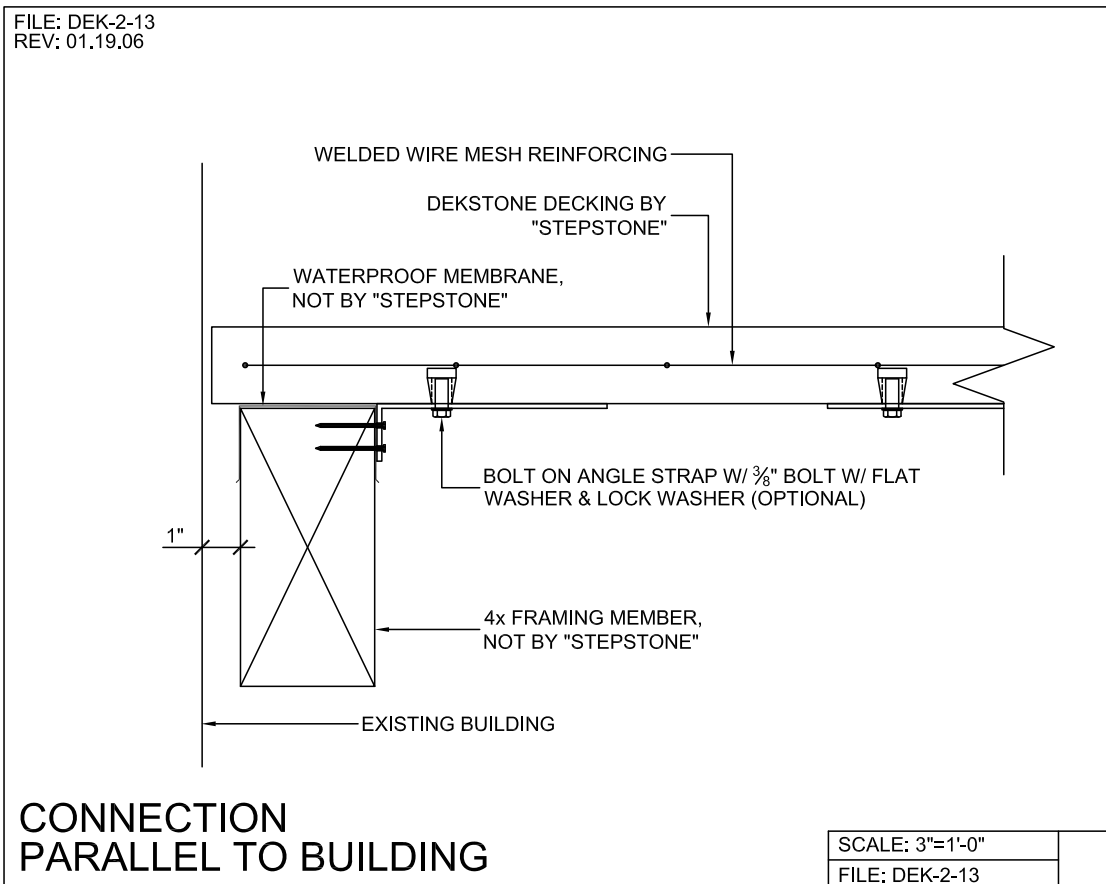


Visit us at our website [dekstone.com](http://dekstone.com)  
Dekstone® is a product of Stepstone, LLC

17025 SO. MAIN ST. GARDENA, CA 90248 310-327-7474  
13238 SO. FIGUEROA ST. LOS ANGELES, CA 90061 [www.dekstone.com](http://www.dekstone.com)

# Dekstone®

Dekstone® Architectural Series



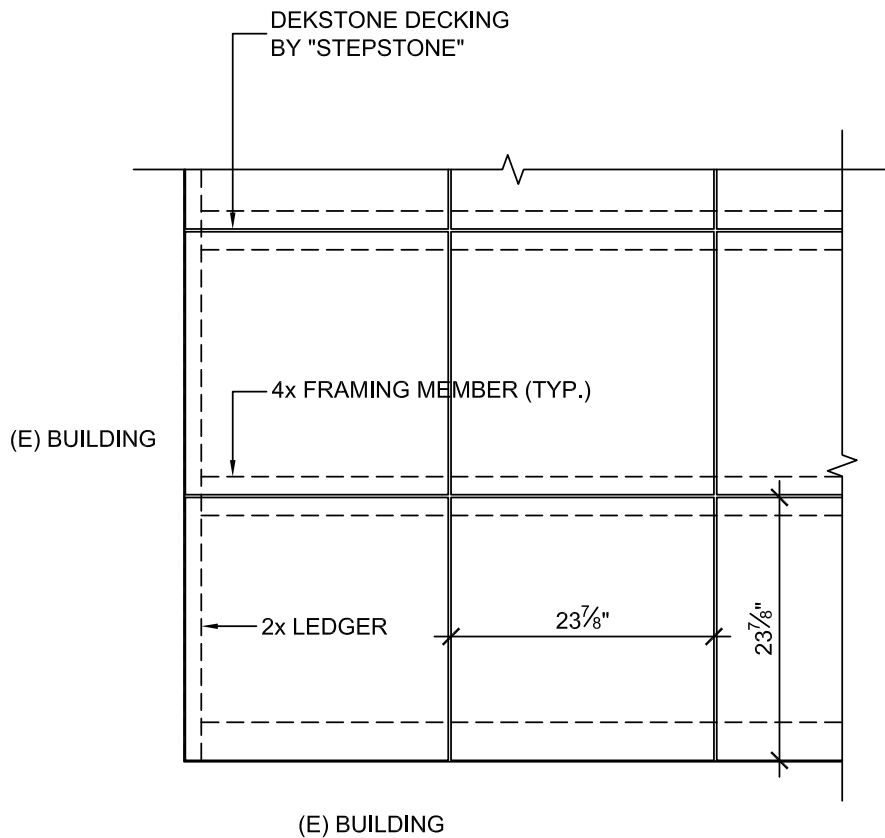
Visit us at our website [dekstone.com](http://dekstone.com)  
Dekstone® is a product of Stepstone, LLC

17025 SO. MAIN ST. GARDENA, CA 90248 310-327-7474  
13238 SO. FIGUEROA ST. LOS ANGELES, CA 90061 [www.dekstone.com](http://www.dekstone.com)

# Dekstone®

Dekstone® Architectural Series

FILE: DEK-2-14  
REV: 01.19.06



INSIDE CORNER @ BUILDING

SCALE: 3/4"=1'-0"

FILE: DEK-2-14

Visit us at our website [dekstone.com](http://dekstone.com)

Dekstone® is a product of Stepstone, LLC

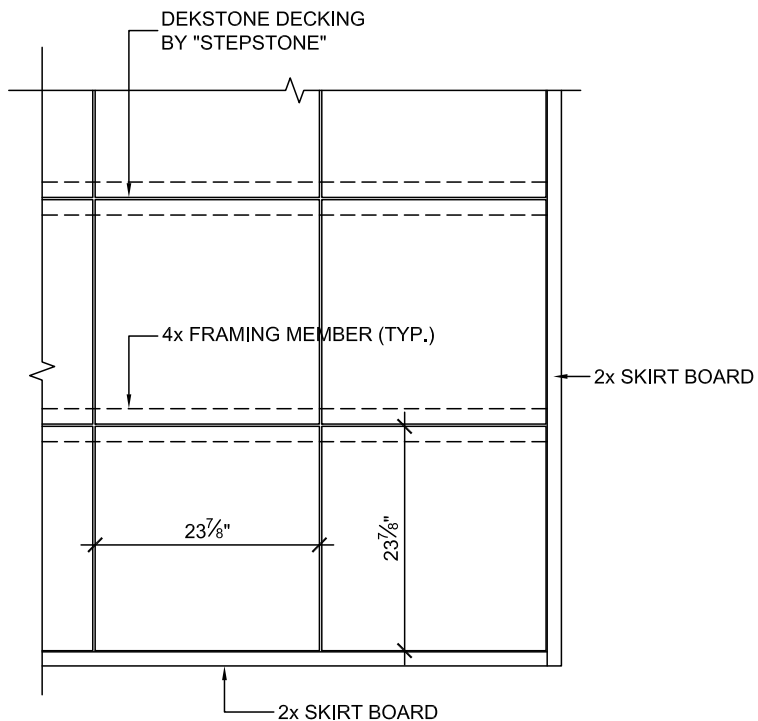
17025 SO. MAIN ST. GARDENA, CA 90248 310-327-7474  
13238 SO. FIGUEROA ST. LOS ANGELES, CA 90061 [www.dekstone.com](http://www.dekstone.com)



# Dekstone®

Dekstone® Architectural Series

FILE: DEK-2-15  
REV: 01.19.06



CONTAINED EDGE PROFILE

SCALE: 3/4"=1'-0"

FILE: DEK-2-15

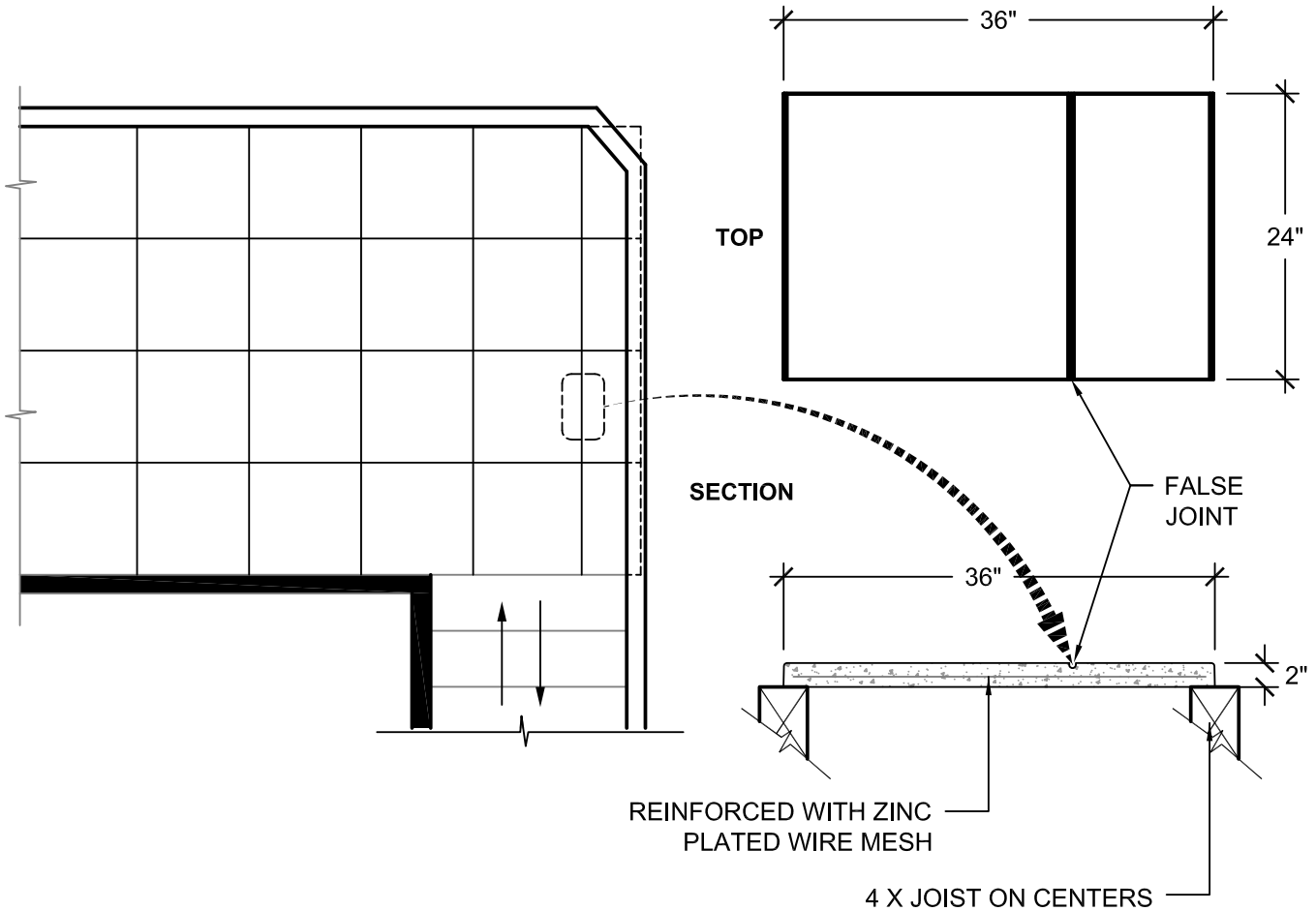
Visit us at our website [dekstone.com](http://dekstone.com)

Dekstone® is a product of Stepstone, LLC

17025 SO. MAIN ST. GARDENA, CA 90248 310-327-7474  
13238 SO. FIGUEROA ST. LOS ANGELES, CA 90061 [www.dekstone.com](http://www.dekstone.com)

# Dekstone®

Dekstone® Architectural Series



**22 lbs. p.s.f.**

## FALSE JOINT REINFORCED DEKSTONE® PAVER, 5,000 p.s.i.

Rev. 03.19.08

NOTE:

FALSE JOINT REINFORCED DECK PAVERS ARE USED IN SITUATIONS WHERE CUTTING IS REQUIRED AND THERE IS LESS THAN 12" THAT NEEDS TO BE SUPPORTED.

# Framing Comparison Chart

**Option #1** 2 x 6 Redwood Decking over 2 x Wood Joists at 16" O.C.

<b>Span</b>	8'-6"	9'-0"	9'-6"	10'-0"	10'-6"	11'-0"	11'-6"	12'-0"	12'-6"	13'-0"	13'-6"	14'-0"	14'-6"	15'-0"	15'-6"
<b>Joist Size</b>	<b>2 x 6</b>														
	<b>2 x 8</b>														
	<b>2 x 10</b>														

**Option #2** 2" Dekstone over 4 x 2 Runners over 2 x Wood Joists at 16" O.C.

<b>Span</b>	8'-6"	9'-0"	9'-6"	10'-0"	10'-6"	11'-0"	11'-6"	12'-0"	12'-6"	13'-0"	13'-6"	14'-0"	14'-6"	15'-0"	
<b>Joist Size</b>	<b>2 x 8</b>														
	<b>2 x 10</b>														
	<b>2 x 12</b>														

Percentage increase in framing weight as compared to option #1.

<b>0%</b>	<b>32%</b>	<b>32%</b>	<b>32%</b>	<b>32%</b>	<b>32%</b>	<b>28%</b>	<b>28%</b>	<b>28%</b>	<b>28%</b>	<b>28%</b>	<b>22%</b>	<b>22%</b>	<b>22%</b>	<b>22%</b>	<b>22%</b>
-----------	------------	------------	------------	------------	------------	------------	------------	------------	------------	------------	------------	------------	------------	------------	------------

**Option #3** 2" Dekstone over 4 x Joists at 24" O.C.

<b>Span</b>	8'-6"	9'-0"	9'-6"	10'-0"	10'-6"	11'-0"	11'-6"	12'-0"	12'-6"	13'-0"	13'-6"	14'-0"	14'-6"	15'-0"	15'-6"
<b>Joist Size</b>	<b>4 x 6</b>														
	<b>4 x 8</b>														
	<b>4 x 10</b>														

Percentage increase in framing weight as compared to option #1.

<b>55%</b>	<b>55%</b>	<b>55%</b>	<b>55%</b>	<b>55%</b>	<b>55%</b>	<b>55%</b>	<b>55%</b>	<b>55%</b>	<b>55%</b>	<b>55%</b>	<b>22%</b>	<b>22%</b>	<b>22%</b>	<b>55%</b>	<b>55%</b>
------------	------------	------------	------------	------------	------------	------------	------------	------------	------------	------------	------------	------------	------------	------------	------------

Stepstone, LLC provides the above chart as a pro forma sales tool introducing architects, engineers and contractors to Dekstone<sup>®</sup> deck design options.This chart is **NOT INTENDED TO BE USED** as the engineering calculations for any specific construction project.

To responsibly represent comparative framing weights, Stepstone, LLC engaged an independent, licensed structural engineer to calculate the options. The basis for the design calculations is as follows:

**Building Code:** 2006 Edition of the International Building Code**Live Loads:** Deck Live Load = 40 PSF**All Nails:** Common Nails

Metal Connectors, Hangers, straps, holdowns, etc... shall be "SIMPSON" or equal.

**Wood:**

STUDS-

2x4- HEW-FIR STUD GRADE

2x6 OR LARGER - HEW-FIR No. 2

JOISTS, LEDGERS, TOP PLATES AND ALL OTHER SAWN LUMBER- DOUGLAS FIR No. 2 OR BETTER

6X BEAMS AND POSTS-

DOUGLAS FIR No. 2 OR BETTER