

## SHORT FORM SPECIFICATION

SIZES:

COPING  
18" X 18" X 2"  
18" X 24" X 2"

RISER BLOCK  
3" X 4" X 24"

STRAIGHTS AND OUTSIDE CORNERS  
1" RADIUS BULLNOSE

RISER TILE  
6" X 12" X 1"

ALL SIZES ARE NOMINAL

MATERIAL: 4,000 PSI HARDROCK CONCRETE, TYPE III CEMENT

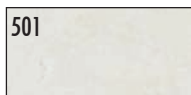
FINISH: STIPPLED OR SANDBLAST

COLOR CHOICE: USING ACTUAL SAMPLES IS STRONGLY RECOMMENDED

DETAILS: VISIT STEPSTONEPRECAST.COM FOR DRAWINGS, DIMENSIONS AND RADIUS FINDER

BUILDING CODE: CHECK WITH LOCAL JURISDICTIONS FOR REQUIREMENTS

GRANADA WHITE



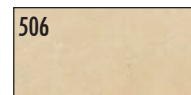
FRENCH GRAY



ICEBERG GREEN



ALMOND



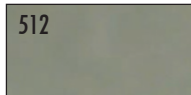
CAFE BROWN



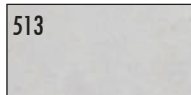
CARAMEL



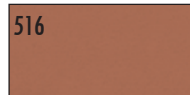
AGAVE



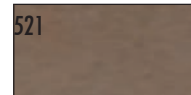
PORCELAIN



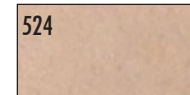
BRICK RED



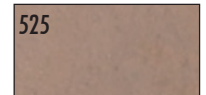
KONA



PEBBLE



ADOBE



GRANADA WHITE



FRENCH GRAY



ICEBERG GREEN



ALMOND



CAFE BROWN



CARAMEL



AGAVE



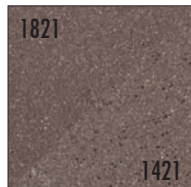
PORCELAIN



BRICK RED



KONA



PEBBLE



ADOBE



PLEASE NOTE: ALL OF OUR PRODUCTS ARE MADE BY HAND FROM NATURAL MATERIALS. VARIATIONS IN COLOR ARE TO BE EXPECTED. TO CONFIRM COLOR, PLEASE REFER TO ACTUAL CONCRETE SAMPLES BEFORE PLACING ORDER. SOME MINOR CHIPPING MAY RESULT FROM SHIPPING, BUT IS NOT DETRIMENTAL TO APPEARANCE OR FUNCTION. STEPSTONE, LLC RECOMMENDS SEALING TO AID IN GROUT REMOVAL AND CLEANING PRIOR TO INSTALLATION. GROUT NATURALLY WILL BOND WITH CONCRETE. IMMEDIATELY REMOVE ANY GROUT SLURRY THAT COMES IN CONTACT WITH THE FINISHED FACE OF THE PRECAST CONCRETE PIECES. ALL SIZES ARE NOMINAL. SEE DETAILS FOR FURTHER INFORMATION. AVAILABLE IN OTHER STANDARD COLORS. **SEE ACTUAL COLOR CONCRETE SAMPLES BEFORE ORDERING.** THIS MATERIAL IS COPYRIGHTED AND IS INTENDED SOLELY FOR THE USE OF CUSTOMERS OF STEPSTONE, LLC